

The network needs of today's IT

NETGEAR
BUSINESS



The nature of IT today puts even more pressure on network switches than ever before. They have to support more end-point devices, as well as increasingly high bandwidth demands. And there is no sign of that slowing down: quite the opposite.

Until recently, the problem was that network switches were designed for large enterprises. For many businesses, these switches were prohibitively expensive, paying for features not needed or wanted, and brought so much complexity that simple changes meant time-consuming reconfiguration.



A new approach to IT network switches

That has changed, with a new generation of network switches, designed to give businesses the affordability and reliability they require, within a highly flexible, scalable modular design. They also bring the option to run Power over Ethernet (PoE) over existing data cabling, to power-up network end points, so there is no need for extra AC/DC.



Simplified edge to core deployment

Easy to deploy and easy to manage, with spine and leaf topologies, across 10Gb and 1G stacking.



No downtime

Hitless failover. No single point of failure for services and storage, so if the CEO is connected to a switch in the stack while he is on a conference call, he won't get disconnected if one switch fails.



Affordable enterprise-grade switching for IT

Budget-friendly switch technology that breaks new ground in price-per-port. Start small and add expansion cards when it is time to scale. Pay only for the functionality that is needed, while getting superlative performance from day one.



Power where it is needed

Use PoE+ to extend power to devices connected to the switch core phones, desktop monitors, laptops, PoS, security cameras, WiFi routers – printers) without needing extra power cabling: simply use the existing data cable.



Your network your way

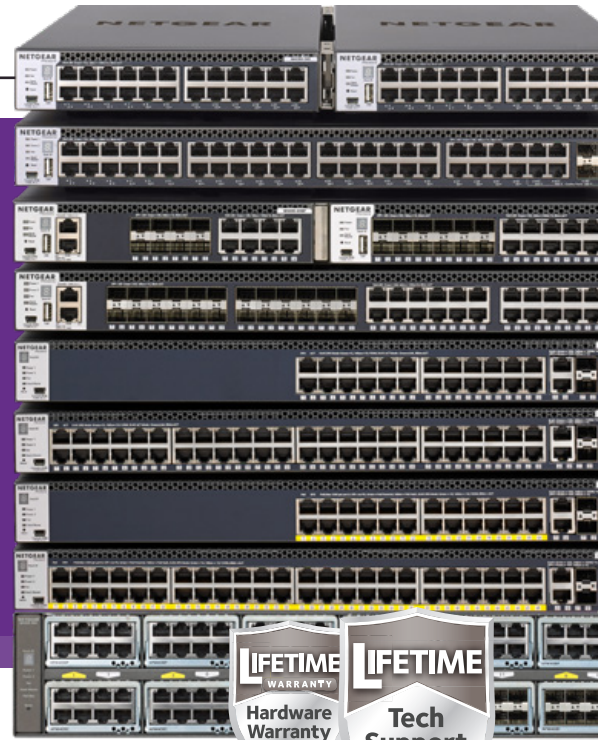
Flexible mix-and-match design and support for multiple switch-stacking topologies. Mix 1Gb and 10Gb in the same switch. Double them and get 40Gb and beyond.



Secure, reliable

Advanced security and QoS help ensure that the network stays safe and stable at all times.

Build a powerful backbone for data transmission.



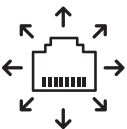
NETGEAR M4300 a switch designed for today's IT needs

The NETGEAR M4300 is a breakthrough in high-performance, flexible and affordable switch technology for today's demanding IT environments. This modular stackable switch series delivers L2/L3/L4/IPv6, with full PoE+ and unrivalled ease of use.



Safe

Non-stop forwarding (NSF) virtual chassis architectures provide advanced High Availability (HA) and hitless failover throughout the stack. Dual redundant, modular power supplies add to business continuity. The standby switch takes over without any service disruption. Advanced security and QOS features are included as standard.



Flexible

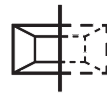
Support for multiple stacking topologies allowing 10G and 1G models to be mixed together, using any 10G port with any media type (for instance RJ45, SFP+ and DAC cables).



Easy

Auto-installation features make set-up simple, supported by a single-pane-of-glass management platform for centralized firmware updates and mass-configurations.

Once running, complexity is reduced with built-in, comprehensive L2 switching and L3 routing. The M4300 is also available with pre-configured ports for even better ease of use.



Scale

From 8 to 96 ports of 10G Ethernet by multiples of 8 ports, and from 2 to 24 ports of 40G Ethernet by multiples of 2 ports. Start small, with maximum granularity between copper and fiber, including PoE+ over 10G. Grow just by adding port expansion cards.



Powerful

1.92 terabits (Tbps) per second of bandwidth, over 2,800 million packets per second, up to 96 ports.



PoE+

The M4300 comes with the option to connect devices to the core network using PoE+: use the same cable for both data and power.



NETGEAR support

NETGEAR ProSafe Limited Lifetime Hardware Warranty, and lifetime support - from a brand with 40 years' experience in delivering reliable, high-performance network products.